

# ProPerIntel – A Data-Driven Diagnostic Platform

Production Performance Intelligence (ProPerIntel), developed by DeGolyer and MacNaughton, is an evergreen platform for analyzing and forecasting well and field performance.

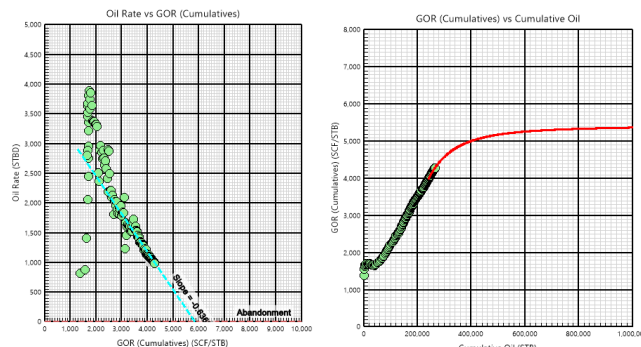
## Key Features

- + Production Diagnostics**  
Identify trends, flow regimes and characteristic well behavior.
- + Production Forecasting**  
Perform advanced decline curve analysis using time-rate-pressure data.
- + Flexible Multiphase Analysis**  
Apply data-driven methods to analyze and forecast secondary phase and ratio trends.
- + Type Well Profiles**  
Construct type well profiles based on characteristic behavior and export to economic software.
- + Automated Forecasts**  
Utilize *qDb* methodology to forecast 1000's of wells instantaneously.
- + Data/model shifting**  
Perform data and model shifting to correlate productivity.
- + Derivatives**  
Calculate derivatives with better resolution to identify decline trends.
- + Statistics**  
Establish statistical curves to analyze/compare well groupings.
- + Performance Based Metrics**  
Monitor well performance, identify impacts of well spacing and completions using performance based metrics.
- + Data Quality Control**  
Verify pressure/rate inconsistency, identify well events, perform filtering for derivative calculations.
- + Multi-well Comparisons**  
Comparison of multiple wells and well groupings for comprehensive evaluation of field performance.
- + Data Import**  
Enables data import from many sources and connections (Excel, OFM, Aries, Access, SQL server, Snowflake, txt files, etc.)
- + Data Export**  
Export performance-based metrics to visualization software (Spotfire, PowerBI)
- + Economic Software Link**  
Export forecasts to any economic software (Aries, PHDWin, Mosaic, ValNav).

## Application Examples

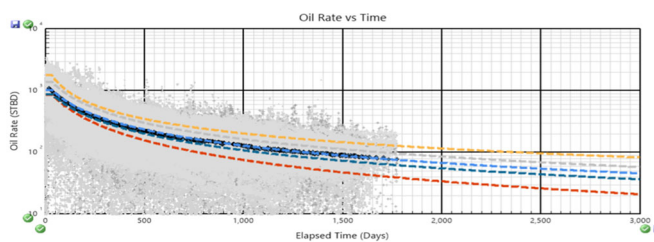
### Multiphase Decline Curve Analysis

- Secondary phase forecasts based on multiphase diagnostics



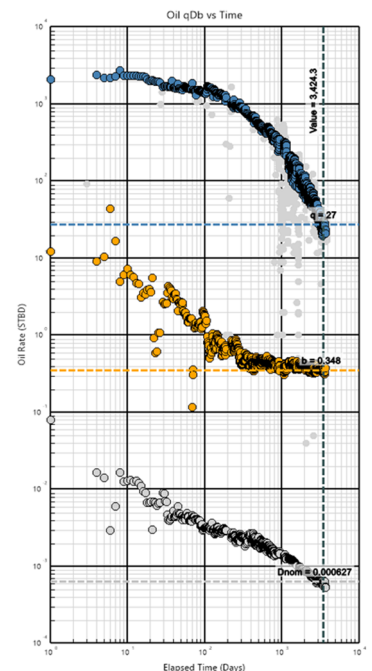
### Type Well Profiles

- Characteristic behavior translated to type well profiles



### *qDb* Methodology

- Instantaneous forecasts based on *qDb* plots.



D&M conducts annual evaluations of approximately 30% of U.S. reserves and 50% of global resources.

The ProPerIntel platform enables comprehensive and efficient analysis of thousands of wells by employing advanced diagnostic-driven methodologies, that are not available in any other commercial software application.

ProPerIntel has become indispensable to our services, and we are pleased to now offer it as a production analysis platform that our clients can utilize and integrate within their own organizations."

Dr. Dilhan Ilk  
Executive Vice President and  
Division Manager for North America  
and Unconventionals Worldwide

5001 Spring Valley Road  
Suite 800E  
Dallas, Texas 75244  
(214) 368-6391  
[www.demac.com](http://www.demac.com)  
ProPerIntel\_Support@demac.com